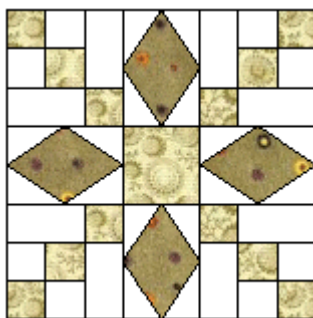


Best Friends

This makes an 8" block and is partly paper pieced !

This is an original pattern. Please abide by the Terms and Conditions of use! :o)



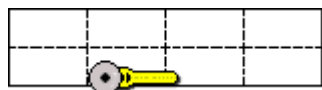
[Click here for the templates!](#)

The first thing that I would recommend that you do, is go to the [Practice Paper Piecing Page](#). When you feel comfy with paper piecing, come on back and try a Best Friends Block! You will need to print out one copy of the template page per block you want to make on very lightweight paper. Fat quarters will be fine for this!

**** Preparing the Pieces and Sewing the Block ****



Start by marking and cutting the Color 2 1-1/2" x 6" strip into four 1-1/2" squares...



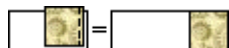
Next mark and cut the Color 3 3" x 10" strip into eight 1-1/2" x 2-1/2" rectangles...



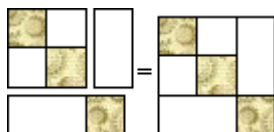
= Now sew together the Color 2 and Color 3 1-1/2" x 12" strips right sides together along one long edge using a scant 1/4" seam allowance. Press seam to darker side. Cut this at 1-1/2" intervals to get eight pieced units...



Now sew together pairs of pieced units to make four patches, using a scant 1/4" seam allowance. Make four units like this...



Now sew a small Color 2 square right sides together to the end of four Color 3 rectangles, again using a scant 1/4" seam, and pressing seam towards the squares...



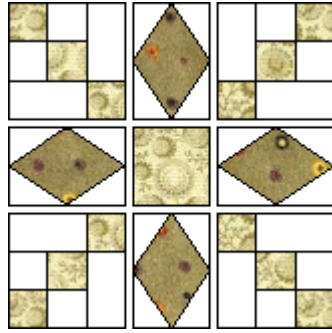
Sew the remaining Color 3 rectangles to the right side of the four patches and press seam towards the four patch. Sew a rectangle-with-square strip to the bottom of this, and press seam towards strip. Make four corner units like this...now on to Page 2!

© July 28 2003
Marcia Hohn
Original Block

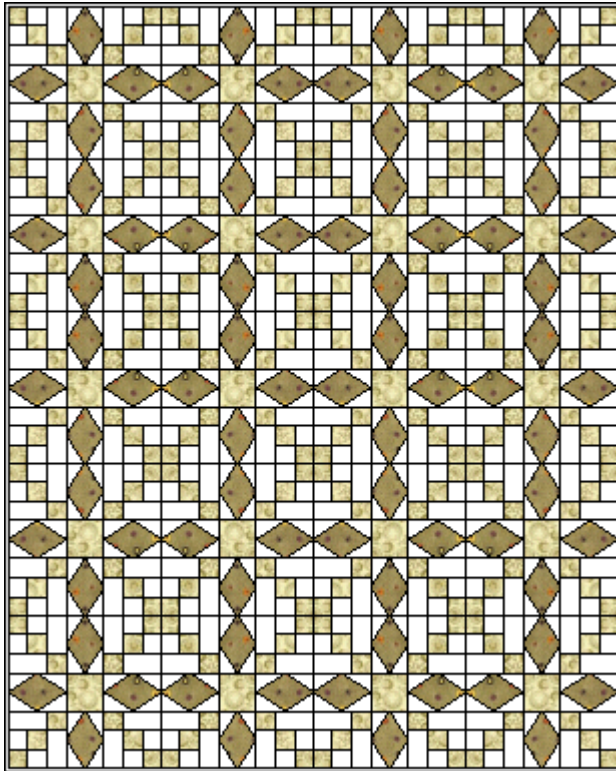
mh paper

<http://www.quilterscache.com>

Best Friends - Page 2



Now paper piece the four side units. Then lay out all of the block's pieces as shown at left, with the Color 2 2-1/2" square as the center unit.



This quilt is four blocks by five, with just a binding around its sides :o)

Happy Quilting Folks!

Marcia :o)

Here's one that Mary made! Ruthie's!
Glenna's A + B

Linda's! Jan's! Becky's! Andrea's!

** Supplies List **



Color 1 Color 1 needs: four 3" x 4" rectangles for paper piecing



Color 2 Color 2 needs: one 1-1/2" x 6" strip AND one 1-1/2" x 12" strip AND one 2-1/2" square



Color 3 Color 3 needs: one 3" x 10" strip AND one 1-1/2" x 12" strip AND sixteen 2" x 3" rectangles for paper piecing

To the Patterns or The Quilter's Cache

© July 28 2003 Marcia
Hohn

mh papers

Page 1

Original Block

<http://www.quilterscache.com>