

CURVED LOG CABIN

QUILT DESIGNED BY **Blue Underground Studios**
MADE BY **Mary Fons** QUILTED BY **LuAnn Downs**

A stunning example of the power of the super-scrappy quilt, this is a Log Cabin with curves. Over 60 different yellows and oranges are reined in by sophisticated slate gray.

Finished Size: 72" × 90"

Finished Blocks: 80 (9") blocks

MATERIALS

34 fat quarters* assorted orange and yellow prints for blocks

4¼ yards dark solid for blocks and binding

5½ yards backing fabric

Full-size quilt batting

*fat quarter = 18" × 20"

NOTE: Yellow and orange fabrics in the quilt shown are from Mary's mega stash collection. Gray is Kona cotton by Robert Kaufman.



CUTTING

Measurements include ¼" seam allowances.

From fat quarters, cut a total of:

- 80 (2" × 8¾") M rectangles.
- 80 (2" × 7¼") L rectangles.
- 80 (2" × 6½") I rectangles.
- 80 (2" × 5") H rectangles.
- 80 (2" × 4¼") E rectangles.
- 80 (2" × 2¾") D rectangles.
- 80 (2") A squares.

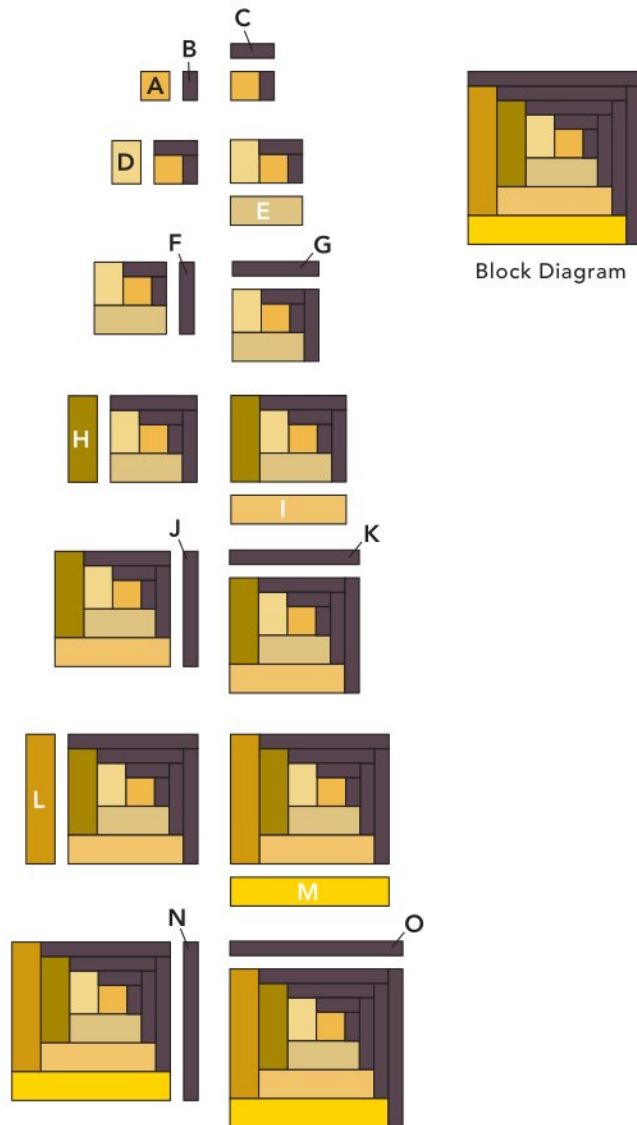
From dark solid, cut:

- 10 (2¼"-wide) strips for binding.
 - 97 (1¼"-wide) strips.
- From strips, cut:
- 80 (1¼" × 9½") O rectangles.
 - 80 (1¼" × 8¾") N rectangles.
 - 80 (1¼" × 7¼") K rectangles.
 - 80 (1¼" × 6½") J rectangles.
 - 80 (1¼" × 5") G rectangles.
 - 80 (1¼" × 4¼") F rectangles.
 - 80 (1¼" × 2¾") C rectangles.
 - 80 (1¼" × 2") B rectangles.

NOTE: Label rectangles as you cut them for easy identification as you assemble blocks. Sticky notes work well.

BLOCK ASSEMBLY

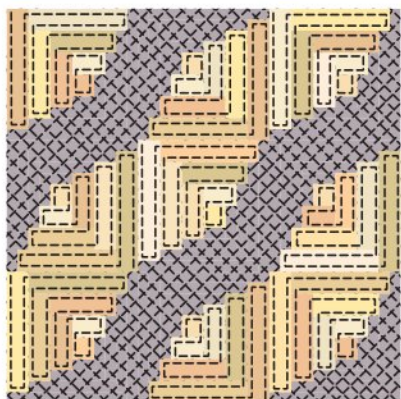
1. Stitch solid B rectangle to right side of print square as shown in *Block Assembly Diagrams*. Add solid C rectangle to top of A/B Unit.
2. Add remaining rectangles to A/B/C Unit in alphabetical order, working counter-clockwise to complete 1 block (*Block Diagram*). You'll be turning the block again and again to add your "logs."
3. Make 80 blocks.



Block Assembly Diagrams

QUILT ASSEMBLY

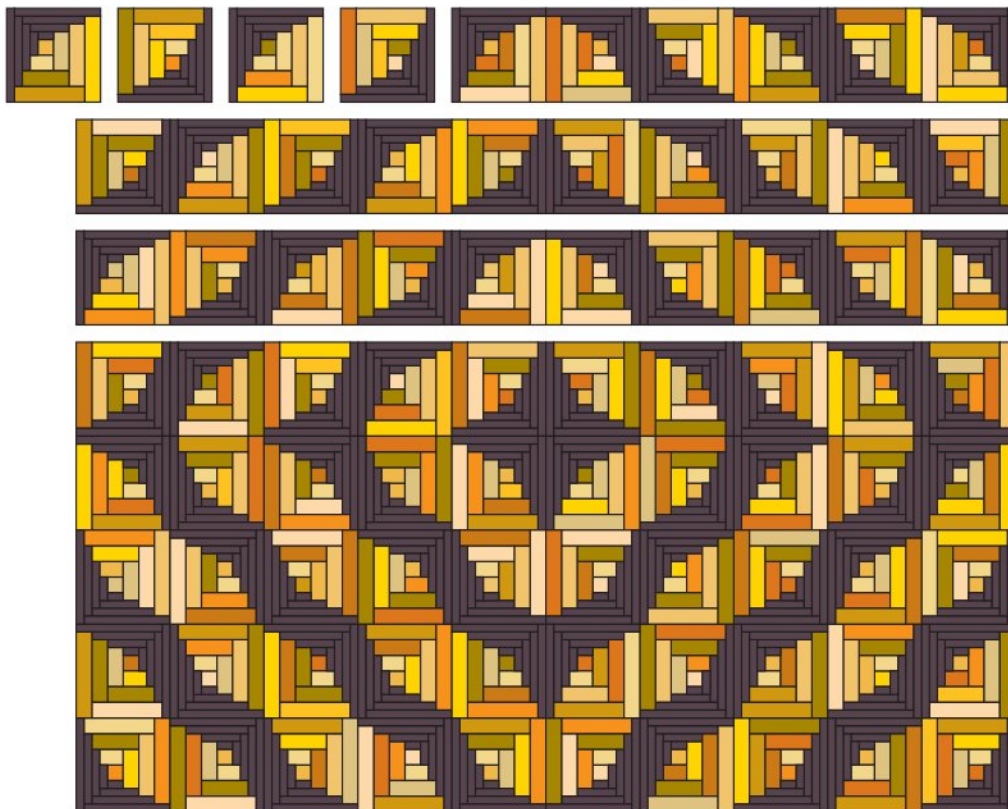
1. Lay out blocks as shown in *Quilt Top Assembly Diagram*.
2. Join blocks into rows; join rows to complete quilt top.



Quilting Diagram

FINISHING

1. Divide backing into 2 (2¾-yard) lengths. Cut 1 piece in half lengthwise to make 2 narrow panels. Join 1 narrow panel to each side of wider panel; press seam allowances toward narrow panels.
2. Layer backing, batting, and quilt top; baste. Quilt as desired. Quilt shown was quilted with continuous straight lines in print rectangles and crosshatching in solid rectangles—Mary feels this highlighted the geometric “feel” of the quilt. (*Quilting Diagram*).
3. Join 2¼"-wide dark solid strips into 1 continuous piece for straight-grain French-fold binding. Add binding to quilt.



Quilt Top Assembly Diagram