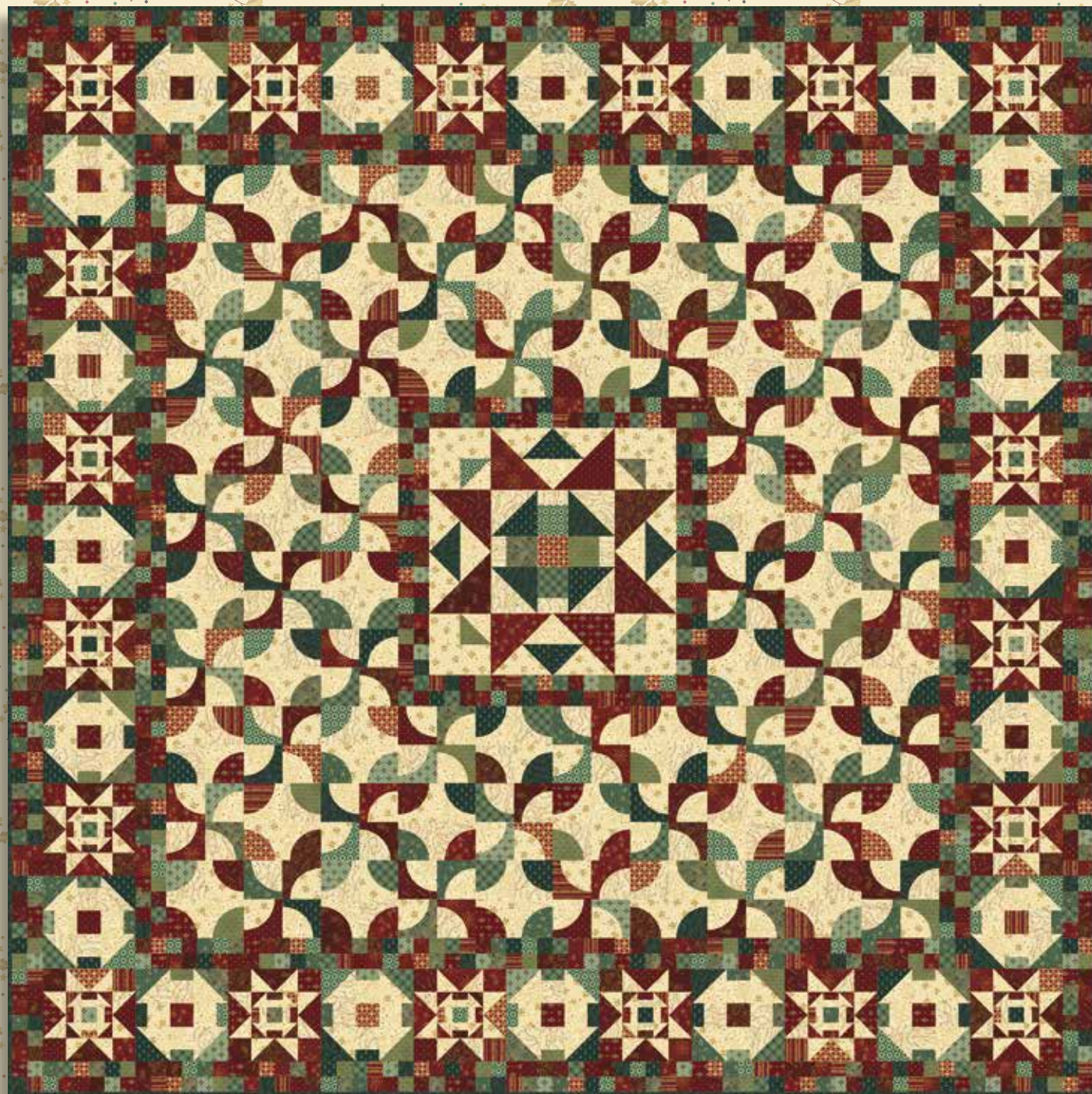


Liberty Legacy

by Kim Diehl



Finished Quilt Size: 70½" x 70½"

 Henry Glass & Co., Inc.



49 West 37th Street, New York, NY 10018
tel: 212-686-5194 • fax: 212-532-3525
Toll-free: 800-294-9495
www.henryglassfabrics.com

facebook

Liberty Legacy

Finished Quilt Size: 70½" x 70½"

MATERIALS

Yardages are based on a 42" width of useable fabric after prewashing and removing selvages.

1½ yards *each* of 3 assorted cream prints for patchwork and appliqué blocks (1581-44; 1585-44; 1586-44)

1 yard of teal blue star blossoms print for patchwork, appliqué blocks, and binding (1578-11)

½ yard *each* of 7 assorted blue prints for patchwork and appliqué blocks (1577-11; 1579-11; 1580-11; 1581-11; 1583-11; 1584-11; 1587-11)

½ yard *each* of 9 assorted red prints for patchwork and appliqué blocks (1570-88; 1571-88; 1572-88; 1573-88; 1574-88; 1575-88; 1576-88; 1581-88; 1582-88)

2⅞ yards of Spiced 108" quilt backing print (Kim suggests 0892-44)

76" x 76" square of batting

Standard sewing and quilting supplies

Supplies for your favorite appliqué method

CUTTING

Cut all pieces across the width of the fabric in the order given unless otherwise noted. Use the appliqué pattern provided on page 9 and your favorite method to cut the curved Drunkard's Path appliqués. For greater ease in cutting the pieces that follow, please refer to the swatch page at the end of this handout.

From the teal blue star blossoms print (1578-11), cut:

7 binding strips, 2½" x 42"

Reserve the remainder of the teal blue print.

For the center Star block churn dash unit, from the cream triangle star vines print (1581-44), cut:

1 strip, 3⅞" x 42"; crosscut into 2 squares, 3⅞" x 3⅞".

Cut each square in half diagonally *once* to yield 2 triangles (total of 4). From the remainder of this strip, cut 4 rectangles, 1½" x 2½".

Keep the above pieces organized into a center Star block cream churn dash set. Reserve the remainder of the cream triangle star vines print.



For the center Star block churn dash unit, from all assorted blue prints, including the teal blue binding print, use the block pictured above as a guide (or choose your own combination of prints) to cut a *combined total of:*

2 squares, 3⅞" x 3⅞"; cut each square in half diagonally *once* to yield 2 triangles (combined total of 4).

4 squares, 2½" x 2½"

Keep the above pieces organized into a center Star block blue churn dash set. Reserve the remainder of the assorted blue prints.

For the middle cream row of the center Star block unit, from the cream stars and toile print (1586-44), cut:

1 strip, 2⅞" x 42" crosscut into 2 squares, 2⅞" x 2⅞".

Cut each square in half diagonally *once* to yield 2 triangles (total of 4). From the remainder of this strip, cut 4 rectangles, 2½" x 8½"

Keep the above pieces organized into a center Star block cream middle row set. Reserve the remainder of the cream stars and toile print.

For the outer cream row of the center Star block, from the cream sprigs and stars print (1585-44), cut:

2 strips, 2½" x 42"; crosscut into 12 rectangles, 2½" x 4½", and 4 squares, 2½" x 2½".

Keep the above pieces organized into a center Star block cream outer row set. Reserve the remainder of the cream sprigs and stars print.

From the reserved remainder of the assorted blue prints, for the center Star block blue triangles, use the pictured quilt as a guide (or choose your own combination of prints) to cut a *combined total* of:

4 squares, $2\frac{1}{2}$ " x $2\frac{1}{2}$ ", from one dark blue print
4 squares, $2\frac{1}{2}$ " x $2\frac{1}{2}$ ", from a second dark blue print
4 squares, $2\frac{7}{8}$ " x $2\frac{7}{8}$ ", from assorted light blue prints;
cut each square in half diagonally *once* to yield
2 triangles (combined total of 8)

Keep the above pieces organized into a center Star block blue triangle set. Reserve the remainder of the assorted blue prints.

From the assorted red prints, cut a *combined total* of:

8 squares, $4\frac{1}{2}$ " x $4\frac{1}{2}$ ", for the center Star block star points
1 square, $2\frac{1}{2}$ " x $2\frac{1}{2}$ ", for the center Star block churn dash center square

Keep the above pieces organized into a center Star block red center square and star point set. Reserve the remainder of the assorted red prints.

From the reserved remainder of *each* assorted red and blue print, for the checkerboard, cut:

65 squares, $1\frac{1}{2}$ " x $1\frac{1}{2}$ " (combined total of 1,105)
Keep the above pieces organized into a checkerboard set. Reserve the remainder of the assorted red and blue prints.

From the reserved remainder of *each* assorted red and blue print, for the Drunkard's Path A blocks, cut:

10 squares, 3" x 3" (combined total of 170)
Keep the above pieces organized into an A block assorted print background set. Reserve the remainder of the assorted red and blue prints.

From the reserved remainder of *each* cream print, for the Drunkard's Path B blocks, cut:

56 squares, 3" x 3" (combined total of 168)
Keep the above pieces organized into a B block cream background set. Reserve the remainder of the assorted cream prints.

From the reserved remainder of all cream prints, for the middle outer border large churn dashes, small churn dashes, and Star blocks, cut a *combined total* of:

80 squares, 2" x 2"
40 squares, $3\frac{1}{8}$ " x $3\frac{1}{8}$ "; cut each square in half diagonally *once* to yield 2 triangles (combined total of 80)
Keep the above 2" squares and $3\frac{1}{8}$ " triangles organized into a large churn dash cream set.

80 rectangles, 1" x $1\frac{1}{2}$ "

40 squares, $1\frac{1}{8}$ " x $1\frac{1}{8}$ "; cut each square in half diagonally *once* to yield 2 triangles (combined total of 80)

Keep the above 1" x $1\frac{1}{2}$ " rectangles and $1\frac{1}{8}$ " triangles organized into a small churn dash cream set.

160 squares, 2" x 2"

Keep 2" squares organized into a star point cream set.
Reserve the remainder of all assorted cream prints.

From the reserved remainder of all assorted blue prints, for the middle outer border large and small churn dashes, cut a *combined total* of:

80 rectangles, $1\frac{1}{4}$ " x 2"

40 squares, $3\frac{1}{8}$ " x $3\frac{1}{8}$ "; cut each square in half diagonally *once* to yield 2 triangles (combined total of 80)

Keep the above $1\frac{1}{4}$ " x 2" rectangles and the $3\frac{1}{8}$ " triangles organized into a large churn dash blue set.

20 squares, $1\frac{1}{2}$ " x $1\frac{1}{2}$ "

Keep the above $1\frac{1}{2}$ " squares organized into a small churn dash blue center square set. Reserve the remainder of the assorted blue prints.

From the reserved remainder of all assorted red prints, for the middle outer border Star blocks and Churn Dash blocks, cut a *combined total* of:

20 squares, 2" x 2"

Keep the above 2" squares organized into a large churn dash red center square set.

80 rectangles, 1" x $1\frac{1}{2}$ "

40 squares, $1\frac{1}{8}$ " x $1\frac{1}{8}$ "; cut each square in half diagonally *once* to yield 2 triangles (combined total of 80)

Keep the above 1" x $1\frac{1}{2}$ " rectangles and $1\frac{1}{8}$ " triangles organized into a small churn dash red background set.

80 rectangles, 2" x $3\frac{1}{2}$ "

80 squares, 2" x 2"

Keep the above 2" x $3\frac{1}{2}$ " rectangles and 2" squares organized into a Star block red background set.

Reserve the remainder of the assorted red prints.

From the reserved remainder of all assorted cream prints, cut a *combined total* of:

168 curved Drunkard's Path appliqués

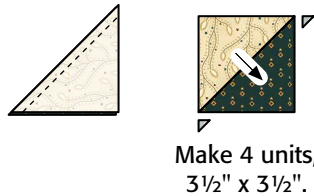
From the reserved remainder of all assorted red and blue prints, cut a *combined total* of:

168 curved Drunkard's Path appliqués

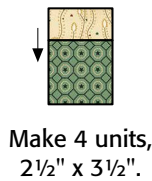
PIECING the Center Star Block

Sew all pieces with right sides together and a $\frac{1}{4}$ " seam allowance unless otherwise noted. Press the seam allowances as indicated by the arrows or otherwise specified.

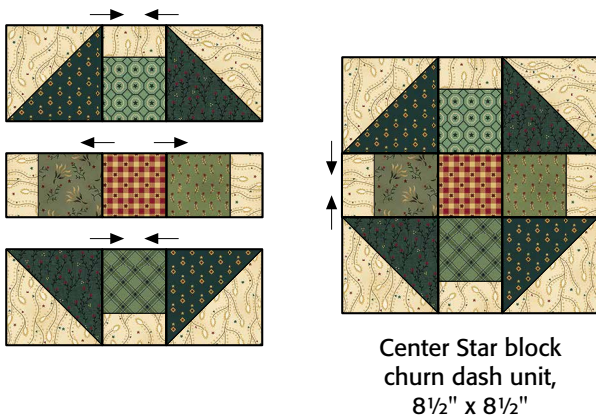
- 1 Select the center Star block cream and blue churn dash sets and the red $2\frac{1}{2}$ " center square. Join a blue and a cream $3\frac{7}{8}$ " triangle along the long diagonal edges. Press. Trim away the dog-ear points. Repeat for a total of four pieced blue and cream half-square-triangle units measuring $3\frac{1}{2}$ " square, including the seam allowances.



- 2 Join a cream $1\frac{1}{2}$ " x $2\frac{1}{2}$ " rectangle to a blue $2\frac{1}{2}$ " square. Press. Repeat for a total of four pieced side rectangle units measuring $2\frac{1}{2}$ " x $3\frac{1}{2}$ ", including the seam allowances.

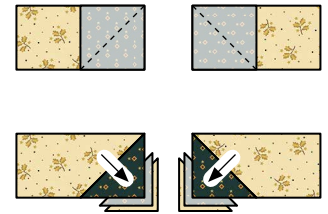


- 3 Lay out the units from steps 1 and 2, and the red $2\frac{1}{2}$ " square in three horizontal rows as shown. Join the pieces in each row. Press. Join the rows. Press. The pieced churn dash unit for the center Star block should measure $8\frac{1}{2}$ " square, including the seam allowances.

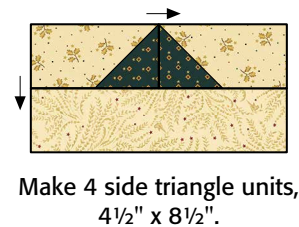


- 4 Select the center Star block cream middle and outer row sets, the blue triangle set, and the red star points set. Use a pencil and an acrylic ruler to draw a diagonal sewing line from corner to corner on the wrong side of the eight dark blue $2\frac{1}{2}$ " squares.

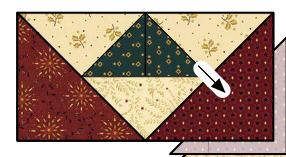
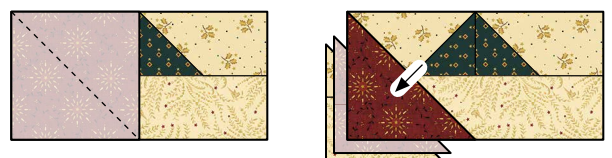
- 5 Layer a prepared dark blue $2\frac{1}{2}$ " square onto one end of a cream sprigs and stars $2\frac{1}{2}$ " x $4\frac{1}{2}$ " rectangle, as shown. Join the pair along the drawn line. Press the resulting inner triangle open, aligning the corner with the corner of the cream rectangle. Trim away the layers beneath the top triangle, leaving a $\frac{1}{4}$ " seam allowance. In the same manner, sew a mirror-image triangle unit. Repeat for a total of two pieced triangle units and two pieced mirror-image triangle units from each of the two dark blue prints, with each triangle unit measuring $2\frac{1}{2}$ " x $4\frac{1}{2}$ ", including the seam allowances.



- 6 Join a triangle unit and a mirror-image triangle unit from one matching blue print. Press the seam allowances to one side, in the direction that produces the best point. Join this unit to a cream stars and toile $2\frac{1}{2}$ " x $8\frac{1}{2}$ " rectangle as shown. Press. Repeat for a total of four pieced side triangle units measuring $4\frac{1}{2}$ " x $8\frac{1}{2}$ ", including the seam allowances.

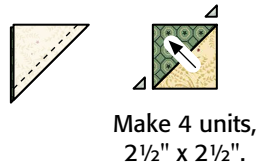


- 7 Draw a diagonal sewing line on the wrong side of each red $4\frac{1}{2}$ " square as previously instructed. Referring to the illustration, layer, stitch, press, and trim a prepared red square onto a side triangle unit as instructed in step 5. In the same manner, add a red mirror-image star point to the remaining end of the unit. Repeat for a total of four pieced red star point units measuring $4\frac{1}{2}$ " x $8\frac{1}{2}$ ", including the seam allowances.

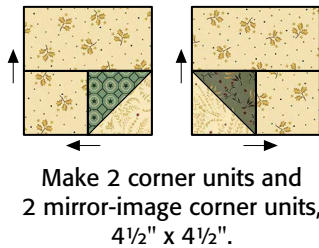


Make 4 red star point units, $4\frac{1}{2}$ " x $8\frac{1}{2}$ ".

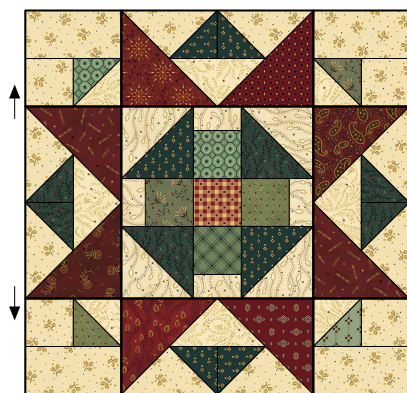
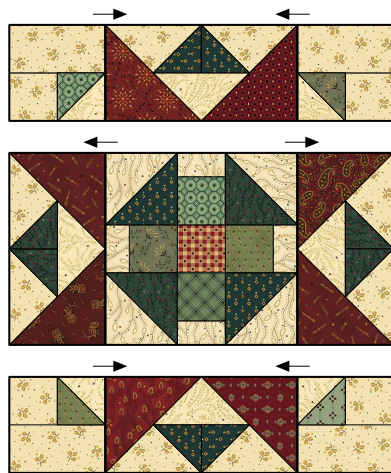
- 8 Join, press, and trim a cream stars and toile and an assorted blue $2\frac{7}{8}$ " triangle along the long diagonal edges as previously instructed. Repeat for a total of four pieced blue half-square-triangle units, one unit from each of the four prints, measuring $2\frac{1}{2}$ " square including the seam allowances. You'll have one unused triangle from each of the four blue prints.



- 9 Lay out one blue half-square-triangle unit, one cream sprigs and stars $2\frac{1}{2}$ " square, and one cream sprigs and stars $2\frac{1}{2}$ " x $4\frac{1}{2}$ " rectangle in two horizontal rows as shown. Join the pieces in each row. Press. Join the rows. Press. Repeat for a total of two pieced corner units and two pieced mirror-image corner units measuring $4\frac{1}{2}$ " square, including the seam allowances.



- 10 Lay out the step 3 churn dash unit, the step 7 red star point units, and the step 9 corner units in three horizontal rows as shown. Join the pieces in each row. Press. Join the rows. Press. The pieced center Star block should measure $16\frac{1}{2}$ " square, including the seam allowances.



Center Star block,
 $16\frac{1}{2}$ " x $16\frac{1}{2}$ ".

PIECING and ADDING the Quilt Center Checkerboard

- 1 Using the assorted red and blue $1\frac{1}{2}$ " squares cut for the checkerboard, and choosing the prints randomly, select 144 squares.
- 2 Join 16 squares end to end to form a pieced strip. Press. Repeat for a total of four pieced strips measuring $1\frac{1}{2}$ " x $16\frac{1}{2}$ ", including the seam allowances.



Make 4 strips,
 $1\frac{1}{2}$ " x $16\frac{1}{2}$ ".

- 3 Join two pieced strips, turning the direction of one strip so the seams nest together. Press. Repeat for a total of two side checkerboard rows measuring $2\frac{1}{2}$ " x $16\frac{1}{2}$ ", including the seam allowances. Referring to the pictured quilt on the cover of the handout, join these rows to the right and left sides of the center Star block. Press the seam allowances toward the checkerboard.



Make 2 side checkerboard rows,
 $2\frac{1}{2}$ " x $16\frac{1}{2}$ ".

- 4 Using 40 assorted red and blue $1\frac{1}{2}$ " squares for each checkerboard row (combined total of 80 for two rows), repeat steps 2 and 3 to make two top/bottom checkerboard rows measuring $2\frac{1}{2}$ " x $20\frac{1}{2}$ ", including the seam allowances. Join these pieced rows to the remaining sides of the center Star block. Press the seam allowances toward the checkerboard. The quilt top should now measure $20\frac{1}{2}$ " square, including the seam allowances. Reserve the remaining assorted red and blue $1\frac{1}{2}$ " squares from the checkerboard set for later use.



Make 2 top/bottom checkerboard rows,
 $2\frac{1}{2}$ " x $20\frac{1}{2}$ ".

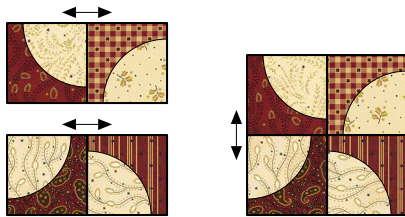
STITCHING *the Drunkard's Path* A and B Blocks

- 1 Select the set of assorted print 3" squares cut for the Drunkard's Path A blocks, and the assorted cream curved Drunkard's path appliqués. Use your favorite method to appliqué 168 cream quarter-block A units measuring 3" square, including the seam allowances. Please note that only the curved edge of the appliqués should be stitched, with the raw straight edges aligned with the edges of the background squares before the excess fabric underneath the top appliqué is trimmed away. You'll have two unused 3" background squares.



Make 168 cream A units, 3" x 3".

- 2 Referring to the illustration and choosing the background prints randomly, lay out four cream quarter-block units in two horizontal rows. Join the units in each row. Press. Join the rows. Press. Repeat for a total of 42 pieced Drunkard's Path A blocks measuring 5½" square, including the seam allowances.



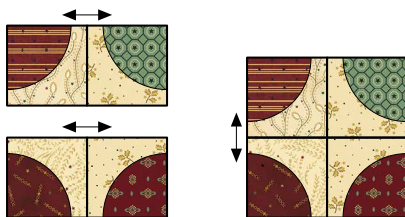
Make 42 A blocks, 5½" x 5½".

- 3 Select the set of assorted cream print 3" squares cut for the Drunkard's Path B blocks, and the assorted print curved Drunkard's path appliqués. Referring to the illustration, appliqué 168 assorted print quarter-block B units measuring 3" square, including the seam allowances.



Make 168 assorted print B units, 3" x 3".

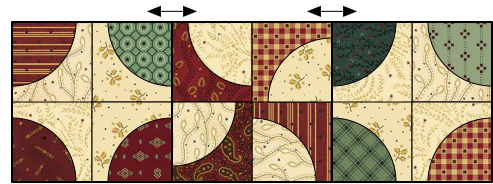
- 4 Again referring to the illustration, and choosing the prints randomly, repeat step 2 to piece 42 Drunkard's Path B blocks measuring 5½" square, including the seam allowances.



Make 42 B blocks, 5½" x 5½".

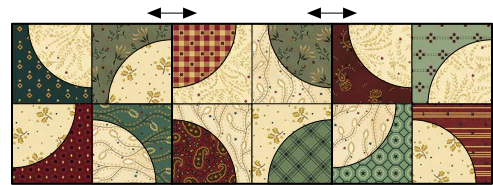
ADDING *the Drunkard's Path* Blocks to the Quilt Top

- 1 Lay out two Drunkard's Path B blocks and one Drunkard's Path A block in alternating positions. Join the blocks. Press. Repeat for a total of three short A rows measuring 5½" x 15½", including the seam allowances.



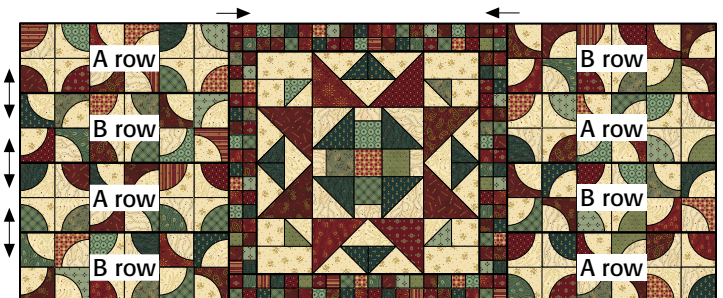
Make 4 short A rows, 5½" x 15½".

- 2 Lay out two Drunkard's Path A blocks and one Drunkard's Path B block in alternating positions. Join the blocks. Press. Repeat for a total of three pieced short B rows measuring 5½" x 15½", including the seam allowances.

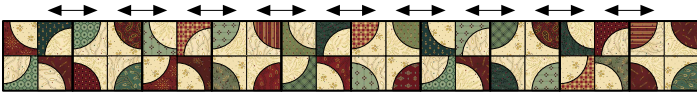


Make 4 short B rows, 5½" x 15½".

- 3 Referring to the illustration, join two short A rows and two short B rows. Press. Join this block unit to the left side of the quilt top. Press. Again referring to the illustration, join two short B rows and two short A rows. Press. Join this block unit to the right side of the quilt top. Press. The quilt top should now measure 20½" x 50½", including the seam allowances.

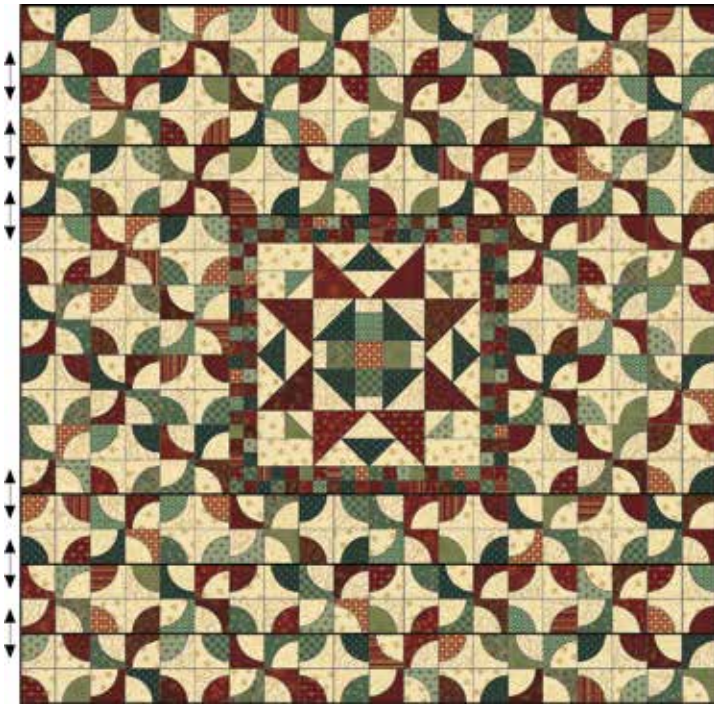


- 4 Lay out five Drunkard's Path B blocks and five Drunkard's Path A blocks in alternating positions. Join the blocks. Press. Repeat for a total of six C rows measuring $5\frac{1}{2}'' \times 50\frac{1}{2}''$, including the seam allowances.



Make 6 long C rows,
 $5\frac{1}{2}'' \times 50\frac{1}{2}''$.

- 5 Referring to the illustration, and turning the rows in the needed direction to achieve the quilt design, join three C rows. Press. Join this pieced unit to the top of the quilt top. Press. In the same manner, join the remaining three C rows, again turning the rows in the needed direction. Press. Join this unit to the remaining side of the quilt top. Press. The quilt top should now measure $50\frac{1}{2}''$ square, including the seam allowances.



PIECING and ADDING the Inner Checkerboard Border

- 1 Using the assorted red and blue $1\frac{1}{2}''$ squares cut for the checkerboard, and choosing the prints randomly, select 416 squares.
- 2 Join 50 squares end to end to form a pieced strip. Press. Repeat for a total of four pieced strips measuring $1\frac{1}{2}'' \times 50\frac{1}{2}''$, including the seam allowances.

- 3 Join two pieced strips, turning the direction of one strip so the seams nest together. Press. Repeat for a total of two side checkerboard rows measuring $2\frac{1}{2}'' \times 50\frac{1}{2}''$, including the seam allowances. Referring to the pictured quilt on the cover of the hand-out, join these rows to the right and left sides of the quilt top. Press the seam allowances toward the checkerboard.
- 4 Using 108 assorted red and blue $1\frac{1}{2}''$ squares for each checkerboard row (combined total of 216 for two rows), repeat steps 2 and 3 to make two top/bottom checkerboard rows measuring $2\frac{1}{2}'' \times 54\frac{1}{2}''$, including the seam allowances. Join these pieced rows to the remaining sides of the quilt top. Press the seam allowances toward the checkerboard. The quilt top should now measure $54\frac{1}{2}''$ square, including the seam allowances. Reserve the remaining assorted red and blue $1\frac{1}{2}''$ squares from the checkerboard set for later use.

PIECING the Outer Middle Border Large Churn Dash Blocks and Small Churn Dash Units

- 1 Select the sets of assorted cream and assorted blue pieces cut for the outer middle border large Churn Dash blocks, and the assorted red $2''$ squares cut for the block centers.
- 2 Choosing the prints randomly, join, press, and trim a cream and blue $3\frac{1}{8}''$ triangle as previously instructed. Repeat for a total of 80 pieced half-square-triangle units measuring $2\frac{3}{4}''$ square, including the seam allowances.
- 3 Again choosing the prints randomly, join a blue $1\frac{1}{4}'' \times 2''$ rectangle to a cream $2''$ square. Press. Repeat for a total of 80 pieced side churn dash units measuring $2'' \times 2\frac{3}{4}''$, including the seam allowances.



Make 80 units,
 $2\frac{3}{4}'' \times 2\frac{3}{4}''$.



Make 80 units,
 $2'' \times 2\frac{3}{4}''$.

- 4 Using the step 2 and step 3 patchwork units and the red $2''$ squares, follow step 3 of "Piecing the Center Star Block" to make 20 large Churn Dash blocks measuring $6\frac{1}{2}''$ square, including the seam allowances.



Make 20 large
Churn Dash blocks,
 $6\frac{1}{2}'' \times 6\frac{1}{2}''$.

- 5 Repeat steps 2–4 using the patchwork sets cut for the small churn dash units, and the blue $1\frac{1}{2}$ " squares, to piece 20 small churn dash units measuring $3\frac{1}{2}$ " square, including the seam allowances.



Make 20 small churn dash units,
 $3\frac{1}{2}$ " x $3\frac{1}{2}$ ".

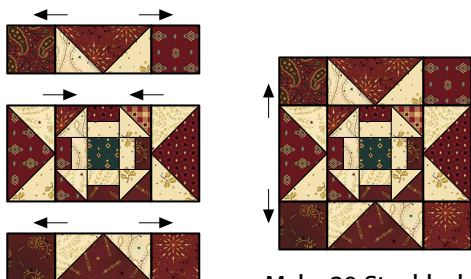
PIECING the Outer Middle Border Star Blocks

- 1 Select the sets of assorted cream and assorted red patchwork pieces cut for the outer middle border Star blocks. Use a pencil and an acrylic ruler to draw a diagonal sewing line on each of the cream 2" squares as previously instructed.
- 2 Choosing the prints randomly, layer a prepared cream 2" square on one end of a red 2" x $3\frac{1}{2}$ " rectangle. Stitch the pair together along the drawn line. Fold the resulting inner triangle open, aligning the corner with the corner of the red rectangle. Press. Trim away the layers beneath the top triangle, leaving a $\frac{1}{4}$ " seam allowance. In the same manner, add a mirror image cream triangle to the remaining end of the rectangle. Repeat for a total of 80 pieced star point units measuring 2" x $3\frac{1}{2}$ ", including the seam allowances.



Make 80 units,
2" x $3\frac{1}{2}$ ".

- 3 Lay out four star point units, four assorted red 2" squares, and one small churn dash unit in three horizontal rows as shown. Join the pieces in each row. Press. Join the rows. Press. Repeat for a total of 20 pieced middle border Star blocks measuring $6\frac{1}{2}$ " square, including the seam allowances.



Make 20 Star blocks,
 $6\frac{1}{2}$ " x $6\frac{1}{2}$ ".

PIECING and ADDING the Outer Middle Border

- 1 Referring to the illustration below, lay out five large Churn Dash blocks and four Star blocks in alternating positions. Join the blocks. Press. Repeat for a total of two pieced border rows measuring $6\frac{1}{2}$ " x $54\frac{1}{2}$ ", including the seam allowances. Join these rows to the right and left sides of the quilt top. Press.
- 2 Again referring to the pictured quilt, lay out six Star blocks and five Churn Dash blocks in alternating positions. Join the blocks. Press. Repeat for a total of two pieced border rows measuring $6\frac{1}{2}$ " x $66\frac{1}{2}$ ", including the seam allowances. Join these rows to the remaining sides of the quilt top. Press. The quilt top should now measure $66\frac{1}{2}$ " square, including the seam allowances.

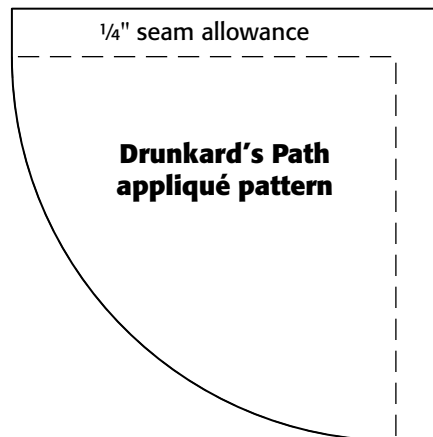


PIECING and ADDING the Outer Checkerboard Border

- 1 Using the assorted red and blue $1\frac{1}{2}$ " squares cut for the checkerboard, and choosing the prints randomly, select 544 squares.
- 2 Join 66 squares end to end to form a pieced strip. Press. Repeat for a total of four pieced strips measuring $1\frac{1}{2}$ " x $66\frac{1}{2}$ ", including the seam allowances.

3 Join two pieced strips, turning the direction of one strip so the seams nest together. Press. Repeat for a total of two side checkerboard rows measuring $2\frac{1}{2}$ " x $66\frac{1}{2}$ ", including the seam allowances. Referring to the pictured quilt on the cover of the hand-out, join these rows to the right and left sides of the quilt top. Press the seam allowances toward the checkerboard.

4 Using 140 assorted red and blue $1\frac{1}{2}$ " squares for each checkerboard row (combined total of 280 for two rows), repeat steps 2 and 3 to make two top/bottom checkerboard rows measuring $2\frac{1}{2}$ " x $70\frac{1}{2}$ ", including the seam allowances. Join these pieced rows to the remaining sides of the quilt top. Press the seam allowances toward the checkerboard. The quilt top should now measure $70\frac{1}{2}$ " square, including the seam allowances. You'll have one unused $1\frac{1}{2}$ " square.



Turn off scaling when printing this page.
The box at left should measure $\frac{1}{2}$ " x $\frac{1}{2}$ ".

COMPLETING *the Quilt*

Layer and baste the quilt top, batting, and backing. Quilt the layers. Join the teal blue binding strips to make one length and use it to bind the quilt.

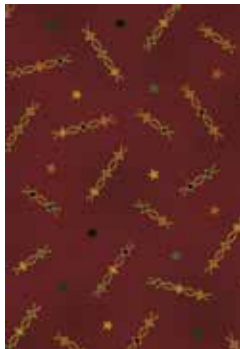
Every effort has been made to ensure that all projects are error free. All the information is presented in good faith, however no warranty can be given nor results guaranteed as we have no control over the execution of instructions. Therefore, we assume no responsibility for the use of this information or damages that may occur as a result. When errors are brought to our attention, we make every effort to correct and post a revision as soon as possible. Please make sure to check www.henryglassfabrics.com for pattern updates prior to starting the project. We also recommend that you test the project prior to cutting for kits. Finally, all free projects are intended to remain free to you and are not for resale or other forms of distribution.



Liberty Star Fabrics in the Collection



1570-88
Starburst - Deep Red



1571-88
Star Squiggles - Deep Red



1572-88
Star Paisley - Deep Red



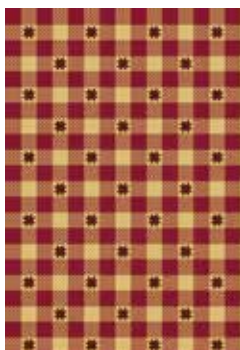
1573-88
Sprinkled Stars - Deep Red



1574-88
Shirting Stars - Deep Red



1575-88
Tossed Stars and Cabbage
Roses - Deep Red



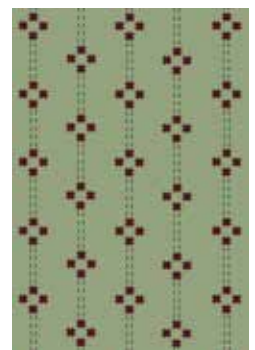
1576-88
Gingham Stars - Medium
Red



1577-11
Stars and Diamonds -
Teal



1578-11
Star Blossoms - Teal



1579-11
Dashed Star Clusters -
Aqua



1580-11
Dotted Star Hexies -
Aqua



1581-11
Triangle Star Vines - Aqua



1581-44
Triangle Star Vines -
Cream



1581-88
Triangle Star Vines -
Deep Red



1582-88
Stars and Ticking Stripe -
Medium Red



1583-11
Stars and Seaweed
Blossoms - Aqua



1584-11
Feathered Stars - Aqua



1585-44
Sprigs and Stars - Cream



1586-44
Stars and Toile - Cream



1587-11
Stars and Ticking Plaid -
Aqua